

## FDT

# Hammer fixing with plastic nail and washer for installation of insulation internal coating



### General details:

New Nylon fixing with countersunk head and pre-assembled nail made of glass fiber thermoplastic composite, provided with polyamide washer, easy installation by percussion.

This fixing is specially designed for supporting the application of plaster on internal insulation walls in polystyrene (internal thermal insulation).

The washer allows quick and safe fixing of polystyrene insulation panels up to 12 mm thick having a supporting surface of adequate dimensions.

The washer has a design with a very low footprint which allows, once the installation is finished, to facilitate the next phase of application of the net and plaster shaving.

Moisture-resistant.

Code	Plug dimensions (D x L)	Drilling diameter	Washer diameter	Nail (D x L)	Colour	Pieces per box	Boxes per carton	Cartons per pallet
FDT40x6x37	6x37	6	40	3.5x37	grey RAL 7035	100	24	30

**Note : measures in millimetres, unless otherwise specified.**



### Materials and technical features:

Dowel body: Polyamide

Nail: Fiber-composite Polyamide PA6

Washer: Polyamide

## FDT

# Hammer fixing with plastic nail and washer for installation of insulation internal coating

### Loads:

MECHANICAL STRENGTH [kN]			
DCxLC	DxL Nail	R250 concrete traction resistance	Hollow brick traction resistance
6x37	3.9x36	0.28	0.23

Note: 1 kN=100 kgf

\* Values obtained from tests carried out in our laboratory.

**BE CAREFUL : A CORRECT SAFETY COEFFICIENT IS TO BE APPLIED TO THE ABOVE VALUES.**

### Advantages:

- Easy and quick installation
- High strength
- Free of metal parts
- Mould resistant
- Highly recommended for exposure to wet areas
- Low thermal conductivity

### Applications:

- Solid masonry
- Specific for external use, plumbing and gutter
- Specific for internal use, electric fixing
- Maximum thickness insulation panels 12 mm

### Installation:

- Apply the insulation panel to the wall with adhesive
- Drill the hole with an appropriate drill diameter for a minimum total depth of 40 mm
- Mount the washer on the dowel as shown in the picture
- Insert the dowel into the hole
- Hit the head of the nail until the assembly is flush with the panel

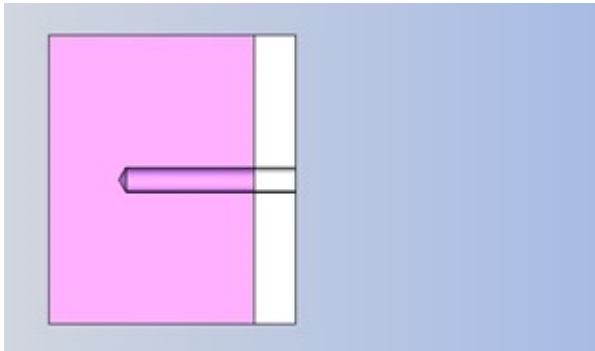


## FDT

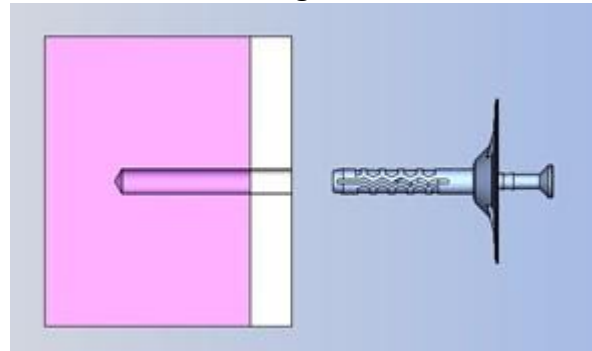
# Hammer fixing with plastic nail and washer for installation of insulation internal coating

Installation scheme:

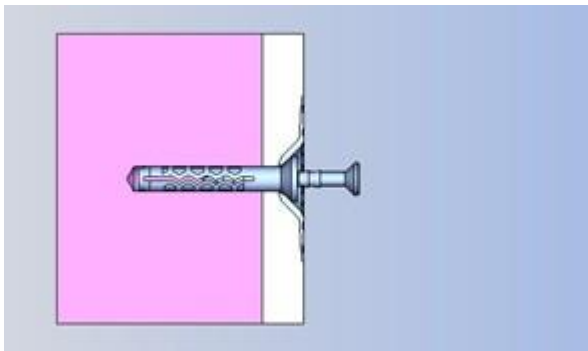
1 - Make the hole



2 - Place the fixing



3 - Insert the fixing



4 - Hit the nail

